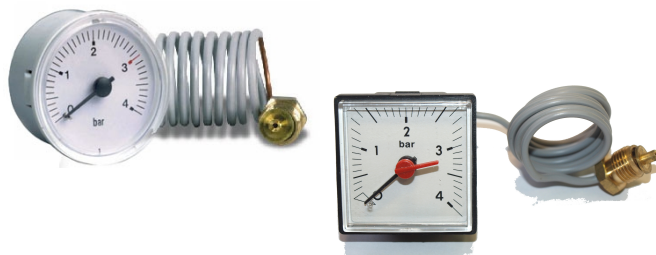


INSTRUCTION MANUAL

Capillary pressure gauges



➤ Description and use

Capillary pressure gauges are designed for all applications, where place of measuring is not identical with place of reading. Mainly used for boilers, heating and cooling systems and other applications, where it is necessary to measure pressures. Round design diameter 37mm, 40mm, 52mm or square 37x37mm mounting- 42x42mm including collar, 45x45mm mounting- 48x48mm including collar.

Capillary pressure gauge consists of pressure measurement system and a head. The head consists of a case and an inspection hole made of plastic protecting the needle, dial with scale and a flexible measuring element. The measuring system is terminated in the head by a measuring element, which transfers the deviations of the flexible part onto the needle showing the value of measured pressure in range of 0-4bar, 0-6bar. The measured value may not exceed the maximum value of measuring range. The pressure gauge may be used to measure pressure in any position. Head of the pressure gauge can be placed in environment with max. temperature 60°C.

➤ Installation

The installation is done by sliding the head into the hole. The pressure gauge is ready for operation once the pressure system is connected to the source of pressure. The connection is done by connecting pin with G1/4 thread, or M14x1 by wrench no.14.

➤ Storing conditions

The storing room must be without chemical contamination or other factors, that could have a disruptive effect on products. The cocks must be treated with care and no major shocks.

Packed cocks must be stored in a dry room with max. humidity 70% and temperature between -5°C and 50°C, with no significant temperature variations.

➤ Disposal

Disposal should be performed as follows: Hand into a recycling collection point.

➤ Possible minor failures and their elimination

Any failures of the pressure gauge must be eliminated by the manufacturer only.

➤ Warranty

Provided, that the product has been placed and used according to the instruction manual, the manufacturer provides with warranty in compliance with a valid code, unless agreed otherwise.

The manufacturer will reject warranty repair, in case the product has been damaged:

- during transport and storage of the purchaser, or his customers,
- during installation or disassembly of device of the purchaser or his customer

➤ Warranty and post-warranty repairs

Warranty and post-warranty repairs are provided by the manufacturer. Warranty claim of a faulty pressure gauge should be done at the seller. The warranty claim will be accepted in case, that following requirements are met:

- submitted warranty list of the given pressure gauge,
- paid pressure gauge invoice,
- the conditions and requirements of operating manual were met.