

# INSTRUCTION MANUAL cased stem thermostat DTHS



## Installation

### ⚠ Warning:

Only qualified person can do installation and connection of thermostat to integrated circuit in accordance with notice nr.50/1978 mim.§ 6.

Installation only without voltage!

1. Install thermostatic well into relevant process connection with G1/2 thread (weld-on piece). Use teflon tape or other appropriate gasket for sealing.
2. Remove regulatory button and thermal fuse cover [1]
3. Loosen three fixation screws of upper case [2]
4. Thread the connected conductor through power supply bushing [4], and tighten attached conductor to thermostat clamp [a], [b], [c], [e], [f], [g] according to requested function. Connect ground cable to ground clamp [d] and [h]
5. Put on frontal case [3] and tighten three fixation screws [2]

The manufacturer will reject warranty repair, in case the product has been damaged:

- during transport and storage of the purchaser, or his customers,
- during installation or disassembly of device of the purchaser or his customer.

## Warranty and post-warranty repairs

Warranty and post-warranty repairs are provided by the manufacturer. Warranty claim of a faulty thermostat should be done at the seller. The warranty claim will be accepted in case, that following requirements are met:

- submitted warranty list of the given thermostat,
- paid invoice of the thermostat,
- the conditions and requirements of operating manual were met.



## Storing conditions

Storing can be done in closed and aired rooms within temperature range 15–60 °C. Storing and transfer must not cause a mechanical damage of the device. Thermostats must be treated with care, with no major shocks or vibrations.

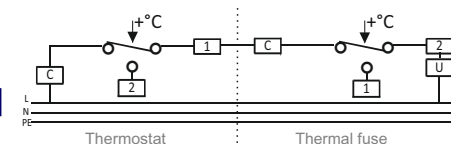
## Disposal

Disposal should be performed as follows: Hand into a recycling collection point.

## Warranty

Provided, that the product has been placed and used according to the instruction manual, the manufacturer provides with warranty in compliance with a valid code, unless agreed otherwise.

## Wiring diagram



### Thermostat:

C -1 switch-off at reaching adjusted temperature  
C -2 switch-on at reaching adjusted temperature

### Thermal fuse:

C -1 switch-off at reaching adjusted temperature  
C -2 switch-on at reaching adjusted temperature

### Certificate of conformity:

For evaluation of conformity was used protocol nr.6450-004/2009

Harmonized norms:

ČSN EN 61010-1:2003, ČSN EN 60695-2-11:2001

info@thermis.cz, www.thermis.cz



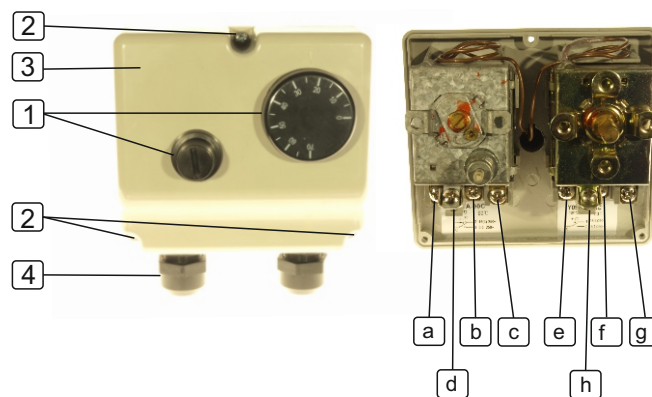
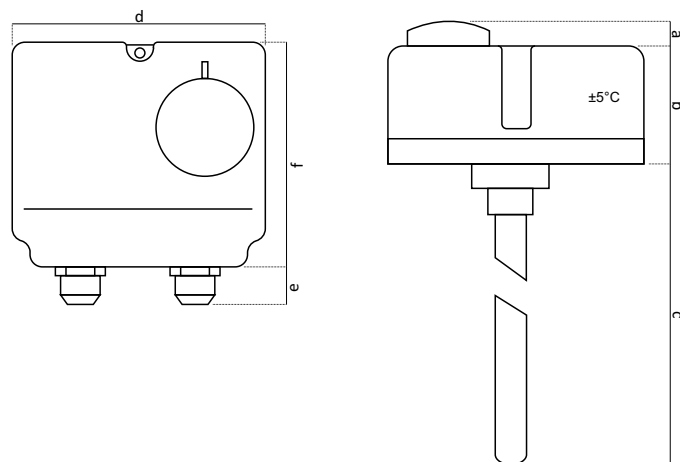
## Description and use

Cased stem thermostat DTHS with manual or automatic PPTC fuse is designated for liquid or other environment. In case of thermostat failure, the thermostat fuse automatically switches-off the circuit. The fuse is part of this device. Fuse serves purely as a protection element, which may be manually turned-on after case removal, if it is design with manual reset. In case of automatic reset, it switches-on automatically after  $\Delta t$  20°. Mounting is performed into heating system using copper protection well with thread G1/2". Suitable material is used for joint sealing, preferably teflon tape..Maximum permissible pressure on the well is 10bar (1 Mpa). Standard stem length is 105mm (in case of need 200 mm). Thermostat case guarantees protection IP 44.

## Design

## Description

## Technical parameters



- 1 regulatory button
- 2 fixation screw
- 3 case
- 4 power supply bushing

- a clamp c
- b clamp 2
- c clamp 1
- d ground clamp
- e clamp c
- f clamp 2
- g clamp 1
- h ground clamp

Dimensions in mm					
a	b	c	d	e	f
10	45	220	100	20	90

Type	DTHS-70A /70M	DTHS-90A/90M
Thermostat temp. range	0-70°C	30-90°C
Fuse temp. range	90°C / 70-90°C	110°C / 90-110°C
IP protection	IP44	IP44
PPTC fuse reset	automatic $\Delta$ t20°C/DTHS-70A manual reset /DTHS-70M	automatic $\Delta$ t20°C/DTHS-90A manual reset / DTHS-90M
Stem length	105/200 mm	105/200 mm
Storing temperature	15-60°C	15-60°C
Setting accuracy	$\pm$ 5°C	$\pm$ 5°C
Contact load	16A / 250V	
Design	freely accessible regulation	