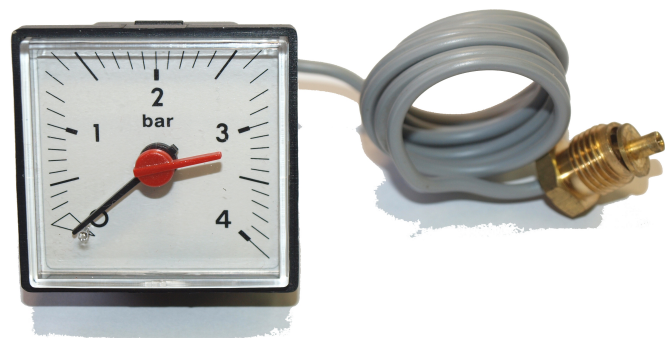


SQUARE CAPILLARY PRESSURE GAUGE

type 1137 37x37mm, type 1145 45x45mm

capillary 1000mm



Specification:

Capillary pressure gauges are designed for all applications, where place of measuring is not identical with place of reading. They may be used in all kinds of operations due to the wide range of types and versions. Frequently used for boilers, heating and other systems, where pressure measuring is essential.

Type	1137	1145
Diameter	37x37mm mounting 42x42mm collar included	45x45mm mounting 48x48mm collar included
Pressure range	0-4 bar; 0-6 bar	
Capillary length, material	500, 1000, 1500, 2000, 3000 mm, copper with PVC protection	
Case	Plastic, white, grey or black design	
Inspection hole	Transparent acrylglass	
Dial	Plastic, white, grey or black design , writing white, grey or black	
Connecting thread	G1/4, M14x1,mounting wrench 14	
Max case temperature	70°C	
Min capillary radius	5mm	

Dimensions:

Type	1137	1145
A	42	48
B	19	19
C	37	45
D	4	4
E	6	6
F	0	0
G	37	45,5
H	37	45,5
I	0,8	0,8
J	11,5	11,5

