

# BIMETALLIC THERMOMETER TR and TÚ

diameter 60, 100, 120mm  
bottom, back connection  
all-stainless steel design



## DESCRIPTION:

- head made of stainless steel 17 240/1.4301
- stem made of stainless steel 17 248/1.4541
  - glass inspection hole
- head surrounding temperature -30+110°C
  - thermometer is supplied without well
- back connection TR (straight thermometer)
- bottom connection TÚ (angular thermometer)

## APPLICATION:

- heating and sanitary technologies
- heating management, power engineering
  - food industry
  - chemical engineering
  - hydraulics

## TECHNICAL PARAMETERS:

- case diameter: 60, 100, 120mm
- temperature ranges: -30+50, 0-120, 0-160, 0-200, 0-350, 0-450°C
- stem length: 45, 60, 100, 160, 250, 400, 630, 1000, 1500mm
- stem diameter: 8mm up to length 400mm  
10mm up to length 630mm
  - accuracy class:  $\pm 2\%$

## SPECIFICATION:

Technical thermometers with bimetallic measure system are universally applicable devices for local temperature measurement in most industries.

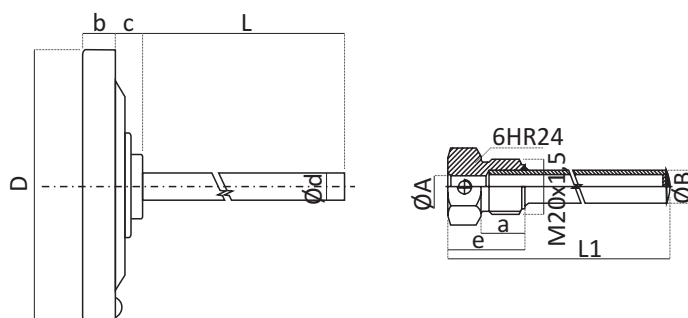
Thermometers are designed for measurement in any position and for less demanding conditions.

Thermometers are produced with various stem lengths, as mentioned in the technical documentation.

Should the stem be protected from high pressures or aggressive mediums, it is necessary to use a thermowell. Standard thermowells available- steel PN6, stainless steel PN25 and PN40, special wells for high parameters according to DIN or ON standards.

Thermometer	Ø Head	Scale division	Measurerange	Stem length ... L [ mm ]								
Type	D [mm]	by °C	°C	Ød=8mm (mat. steel cl. 11)						Ød=10mm (mat. steel cl. 11)		
				45	60	100	160	250	400	630	1000	1500
TR 60	60	1	-30+50		X	X	X	X				
		1	0-120	X	X	X	X	X				
		2	0-200	X	X	X	X	X				
		5	0-350			X	X	X				
		10	0-450			X	X	X				
TR 100	100	1	-30+50		X	X	X	X	X	X	X	X
		1	0-120	X	X	X	X	X	X	X	X	X
		2	0-160		X	X	X	X	X	X	X	X
		2	0-200	X	X	X	X	X	X	X	X	X
		5	0-350			X	X	X	X	X	X	X
		10	0-450			X	X	X	X	X	X	X
TR 120	120	1	-30+50		X	X	X	X	X	X	X	X
		1	0-120		X	X	X	X	X	X	X	X
		2	0-200		X	X	X	X	X	X	X	X
		5	0-350			X	X	X	X	X	X	X
		10	0-450			X	X	X	X	X	X	X

- TR - back connection - straight design



Dimensions in mm							
Type	D	a	b	c	e	L	Ød
TR60	60	16	12	10	28	45,60,100,	8mm up to length
TR100	100	16	12	15	28	160,250,400,	400mm including; 10mm
TR120	120	16	12	15	28	630,1000,1500	up to length 630mm

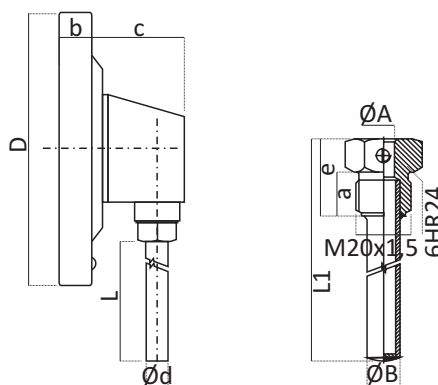
#### INSTALLATION:

- loose installation: if the thermometer is not placed into liquid, gas or pressure environment
- installation with accessories:
  - with sliding threaded socket
  - with thermowell
  - thermometers with ranges 0-350°C and 0- 450°C must not be used without a well

The supplied well is always approx. 5mm longer than the stem. Wells are produced in various designs - steel with polish surface working, chromium and stainless steel 17 2 4 6 / 1 . 4 8 7 8 , 17 248/1.4541, steel wells PN6, stainless steel wells welded together from multiple parts Pn25, one-piece wells PN40. For higher pressures use ON wells, see catalogue page A.1.13.

Thermometer	Ø Head	Scale division	Measure range	Stem length ... L [ mm ]								
Typ	D [mm]	po °C	°C	Ød=8mm (mat. steel cl. 11)					Ød=10mm (mat. steel cl. 11)			
				45	60	100	160	250	400	630	1000	1500
TU 60	60	1	-30+50			X	X	X	X			
		1	0-120			X	X	X	X			
		2	0-200			X	X	X	X			
		5	0-350			X	X	X	X			
		10	0-450			X	X	X	X			
TU 100	100	1	-30+50			X	X	X	X	X	X	X
		1	0-120			X	X	X	X	X	X	X
		2	0-160			X	X	X	X	X	X	X
		2	0-200			X	X	X	X	X	X	X
		5	0-350			X	X	X	X	X	X	X
		10	0-450			X	X	X	X	X	X	X
TU 120	120	1	-30+50			X	X	X	X	X	X	X
		1	0-120			X	X	X	X	X	X	X
		2	0-200			X	X	X	X	X	X	X
		5	0-350			X	X	X	X	X	X	X

• TU - bottom connection - angular design



Dimensions in mm							
Type	D	a	b	c	e	L	Ød
TU60	60	16	12	34	28	45,60,100, 160,250,400, 630,1000,1500	8mm up to length
TU100	100	16	12	32	28		400mm including, 10mm
TU120	120	16	12	32	28		up to length 630mm

#### INSTALLATION:

- loose installation: if the thermometer is not placed into liquid, gas or pressure environment
- installation with accessories:
  - with sliding threaded socket
  - with thermowell
  - thermometers with ranges 0-350°C and 0-450°C must not be used without a well

The supplied well is always approx. 5mm longer than the stem. Wells are produced in various designs - steel with polish surface working, chromium and stainless steel 17 246/1.4878, 17 248/1.4541, steel wells PN6, stainless steel wells welded together from multiple parts Pn25, one-piece wells PN40. For higher pressures use ON wells, see catalogue page A.1.13.

