

# STANDARD THERMOWELL



length from 50mm to 1505mm  
PN 6, 25, 40

### DESCRIPTION:

- materials: steel, brass, copper, stainless steel and other metals, other surface finish available
  - attachment thread -inner, outer
  - process connection thread
  - stem attachment using side bolt, union nut or outer thread on the stem

### APPLICATION:

- heating and sanitary technology
- heating management, power engineering
  - food industry
  - chemical industry
  - hydraulics

### TECHNICAL PARAMETERS:

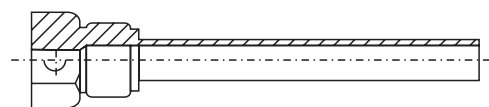
- standard well lengths: 50, 65, 105, 165, 255, 405, 635, 1005, 1505mm, individual
- diameter of hole: 9; 12mm
- thread: M20x1,5, G1/2, 1/2NPT, individual
  - PN 6 -varnished steel, brass/ copper,
  - PN 25 stainless steel multipart, PN 40 one-piece

### SPECIFICATION:

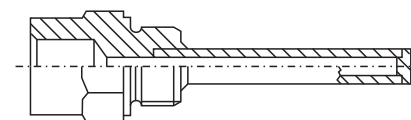
Thermowells are intended to protect stems of all kinds of thermometers, technical, boiler or pressure thermometers mainly in moderate demanding or demanding conditions.

Thermowells are used at operations, where it is essential to seal the pressure system or where the thermometers stem or sensor could be damaged.

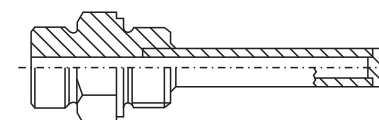
Choice of design must be made with regard to the particular application. **STANDARD** with attachment bolt



According to DIN 43 722 form 5 and 6

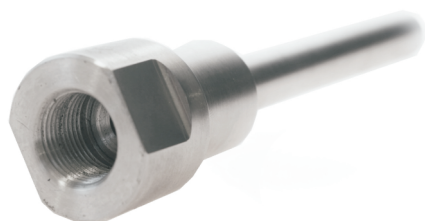


According to DIN 43 722 form 8 and 9



# THERMOWELL FOR HIGH PARAMETERS

length from 50mm to 1505mm  
PN 25 up to unlimited



### DESCRIPTION:

- materials: 11 353, 11523, 15 128, 17 248, 17 348 individual
- attachment thread - inner, outer
  - process connection thread
    - welding conel DIN/ČSN
- flange design according to DIN/ČSN

### APPLICATION:

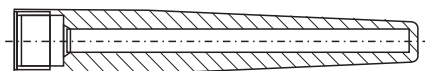
- heating and sanitary technology
- heating management, power engineering
  - food industry
  - chemical industry
    - hydraulics

### TECHNICAL PARAMETERS:

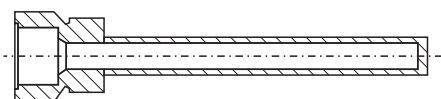
- standard well lengths: 50, 65, 105, 165, 255, 405, 635, 1005, 1505mm, individual
- diameter of hole: 3,5; 5; 7; 9; 12; 14mm
  - thread: M14x1,5, M18x1,5, M20x1,5, M27x2, M33x2, G1/2, G3/4, G1, 1/2NPT, 1NPT, individual

### SPECIFICATION:

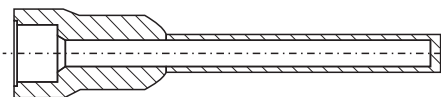
According to DIN 43 722



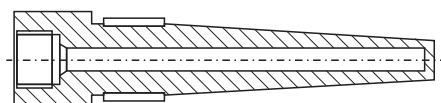
According to ON 027210



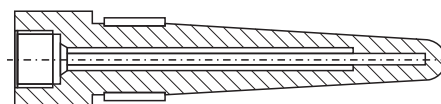
According to ON 027212



According to ON 027215



According to ON 027217

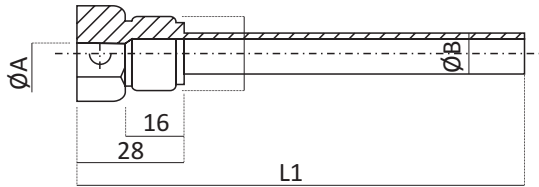


Weldolet



## STANDARD THERMOWELLS

Standard thermowells are designed for protection of all kinds of thermometers mainly the ones used in moderate to demanding conditions. Wells are made of steel 11 353/11 523 (1.0308/1.0570) with varnished surface, chrome. Also made of stainless steel 17 246/1.4878 and 17 248/1.4541. Wells are fitted with thread M20x1,5 or G1/2.



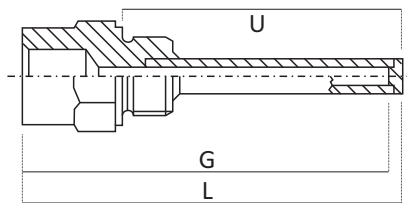
Stem length [mm]	Well length L1 [mm]	ØA[mm]	ØB[mm]
up to 405 mm	50,65,105,165,255,405	8,5	12
from 635 mm	635, 1005,1505	12,4	15
steel PN6, stainless steel multi-part PN25, one-piece PN40			

## HIGH PARAMETER THERMOWELLS ACCORDING TO DIN AND ON STANDARDS

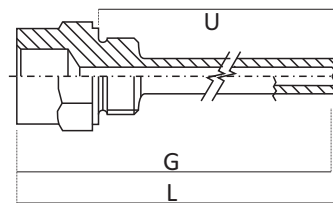
Designed to protect thermometers and thermo-sensors in high operation parameters. Used mainly in power engineering, heating plants and chemical industry. Wide range of materials and individual designs available.

- Well according to DIN 43772 - with thread for thermometer  
- with process thread

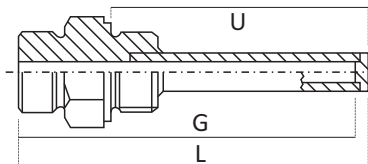
• Form 5 multi-part



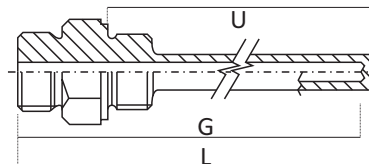
• Form 6 one-piece



• Form 8 multi-part

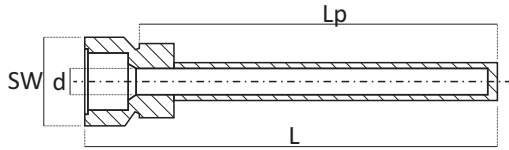


• Form 9 one-piece

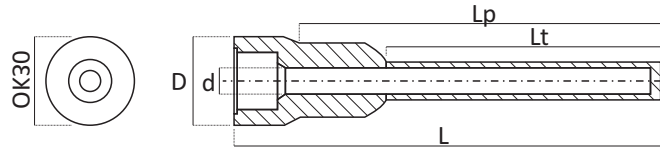


Form 5/6	nominal length	L	G	U	d1 of hole	process connect.	attachment bolt to thermometer
	110	110	G1	U1	7, 9, 11	G1/2 M20x1,5 G3/4 M27x2	G1/2 M20x1,5
	140	140	135	112			
	170	170	165	142			
	200	200	195	172			
	260	260	255	232			
	410	410	405	382			
Form 8/9	73	101	96	73			
	110	138	133	110			
	170	198	193	170			
	260	288	283	260			
	410	438	433	410			

• Well according to ON 027210



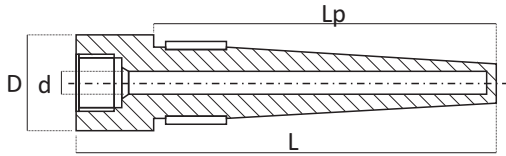
• Well according to ON 027212



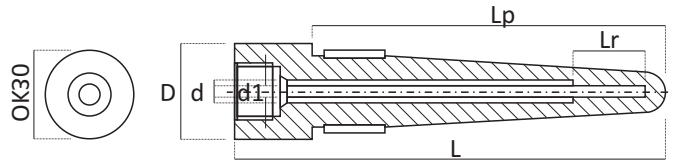
Cylindric thermowell for screwing ON 027210				
Type ON 027210		Parameters		
Code	d of hole (mm)	D outer diameter (mm)		
3,5	3,5	12 (8)		
5	5	12 (8)		
7	7	12		
9	9	14		
Code	Nom. length	Total L	Utility Lu	Submers.Lp
100	100	105	101	73
160	160	165	161	133
250	250	255	251	223
400	400	405	401	373
630	630	635	631	603,5
O	Other	*	*	*
Code	process connection			
M27	M27x2			
O	other - specify: M20x1,5, G1/2, G3/4, 1/2 NPT			
Code	thread			
M14	M14x1,5			
M18	M18x1,5			
M20	M20x1,5			
G1/2"	G1/2"			
1/2NPT	1/2NPT			
O	other - specify			
Code	material			
M1	11 353/11 523 (1.0308/1.0570)		up to 400°C	
M2	15 128 (1.7715)		up to 575°C	
M3	17 248 (AISI 321) (1.4541)		up to 600°C	
M4	17 348 (AISI 316Ti) (1.4571)		up to 500°C	
O	other material			
Code	other			
A	material certificate			
Z	closing plug			
O	other (label, spec. marking, pressure test, O2 design etc.) - specify			
Means of order: 027210 9 160 M27 M20 M3				
Product branding: 0272109160M27M2017248				

Cylindric thermowell for welding/ with a flange ON 027212				
Typ ON 027212		Parameters		
Code	d of hole (mm)	D outer diameter (mm)		
3,5	3,5	12 (8)		
5	5	12 (8)		
7	7	12		
9	9	14		
Code	Nom.length	Total L	Utility Lu	Submers.Lp
100	100	105	101	73
160	160	165	161	133
250	250	255	251	223
400	400	405	401	373
630	630	635	631	603,5
O	other	*	*	*
Code	process connection			
27	D27x2			
O	other - specify			
Code	thread			
M14	M14x1,5			
M18	M18x1,5			
M20	M20x1,5			
G1/2"	G1/2"			
1/2NPT	1/2NPT			
O	other - specify			
Code	material			
M1	11 353/11 523 (1.0308/1.0570)		up to 400°C	
M2	15 128 (1.7715)		up to 575°C	
M3	17 248 (AISI 321) (1.4541)		up to 600°C	
M4	17 348 (AISI 316Ti) (1.4571)		up to 500°C	
Code	flanges according to standards			
P	ČSN/DIN DN25 - DN50 - specify			
O	other material			
Code	other			
A	material certificate			
Z	closing plug			
O	other (label, spec. marking, pressure test, O2 design etc.) - specify			
Means of order: 027212 9 160 27 M20 M3				
Product branding: 027212916027M2017248				

- Well according to ON 027215



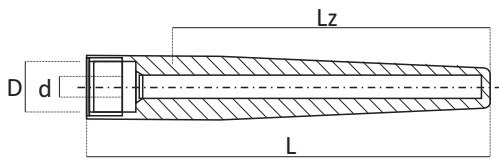
- Well according to ON 027217



Conical thermowell for high velocities to be screwed on ON 027215				
Type	ON 027215 Parameters			
Code	diameter of hole (mm)		D outer diameter (mm)	
3,5	3,5		40	
6,25	6,25		40	
9	9		40	
Code	Nom. length	Total L	Utility Lu	Submers.Lp
100	100	105	101	73
160	160	165	161	133
250	250	255	251	223
400	400	405	401	373
O	other	*	*	*
Code	process connection			
M33	M33x2			
O	other - specify: G1", 1"NPT			
Code	Thread			
M14	M14x1,5			
M18	M18x1,5			
M20	M20x1,5			
G1/2"	G1/2"			
1/2NPT	1/2NPT			
O	other - specify			
Code	Material			
M2	15 128 (1.7715)		up to 575°C	
M3	17 248 (AISI 321) (1.4541)		up to 600°C	
M4	17 348 (AISI 316Ti) (1.4571)		up to 500°C	
O	other material			
Code	other			
A	material atest			
Z	closing plug			
O	other (label, spec. marking, pressure test, O2 design etc.) - specify			
Means of order: 027215 9 160 M33 M20 M3				
Products branding: 0272159160M33M2017248				

Conical thermowell for high velocities to be screwed on ON 027217				
Type	ON 027217 Parameters			
Code	d. of hole(mm)	D1 of hole	D outer diameter (mm)	
3,5	3,5	3,5 Lr =30	40	
6,25	6,25	6,25 Lr =30	40	
9	9	6,25 Lr =30	40	
Code	Nom. length	Total L	Utility Lu	Submers.Lp
100	100	110	101	73
160	160	170	161	133
250	250	260	251	223
400	400	410	401	373
O	other	*	*	*
Code	process connection			
M33	M33x2			
O	other - specify: G1", 1"NPT			
Code	thread			
M14	M14x1,5			
M18	M18x1,5			
M20	M20x1,5			
G1/2"	G1/2"			
1/2NPT	1/2NPT			
O	other - specify			
Code	material			
M2	15 128 (1.7715)		up to 575°C	
M3	17 248 (AISI 321) (1.4541)		up to 600°C	
M4	17 348 (AISI 316Ti) (1.4571)		up to 500°C	
O	other material			
Code	other			
A	material atest			
Z	closing plug			
O	other (label, spec. marking, pressure test, O2 design etc.) - specify			
Means of order: 027217 9 160 M33 M20 M3				
Products branding: 0272179160M33M2017248				

• Well according to DIN 43772



• Weldolet THNV



Conical well for welding /with flange according to DIN 43772				
Type DIN 43772		Parameters		
Code	diam. of hole (mm)	D outer diameter (mm)		
18	3,5	18		
24	7	24		
26	7(9)	26		
Code	Nom. length	Total L	Utility L	Bevel Lz
110	110	112	108	67
140	140	142	138	67
170	170	172	168	135
200	200	202	198	127
260	260	262	258	127
410	410	412	408	277
...	other			
Code	D inner diameter (mm)			
3,5	3,5			
7	7			
9	9			
Code	inner thread			
M14	M14x1,5			
M18	M18x1,5			
M20	M20x1,5			
G1/2"	G1/2"			
1/2NPT	1/2NPT			
Code	material			
M1	11 353/11 523 (1.0308/1.0570)		up to 400°C	
M2	P235GH, P265GH, P250GH (11 373/11 416/11 418)			
M3	15 020 (16Mo3) (1.5415)		up to 550°C	
M4	15 128 (1.7715)		up to 575°C	
M5	17 248 (AISI 321) (1.4541)		up to 600°C	
M6	17 348 (AISI 316Ti) (1.4571)		up to 500°C	
Code	flanges according to standards			
P	ČSN/DIN DN25 - DN50 - specify			
Code	other			
A	material atest			
Z	closing plug			
O	other (label, spec. marking, pressure test, O2 design etc.) - specify			
Means of order: 43772 26 170 9 M20 M5 A				
Product branding: 43772261709M2017248				

Completely pass-through weldolet THNV		
Type THNV		Parameters
Code	Dimensions of the thread / hole	D/d/L (mm) outer Ø inner Ø/ length
D24	d24mm	49/24/40
D26	d26mm	49/26/40
M12	M12x1,5	19/10,5/35
G1/4"	G1/4"	19/11,5/35
M20	M20x1,5	28/18,5/35
G1/2"	G1/2"	19/18,6/35
M24	M24x2	31,5/22/35
G3/4"	G3/4"	31,5/24,1/35
M27	M27x2	40(35)/24,8/40
M30	M30x2	40/28/40
G1"	G1"	40/30/40
M33	M33x2	55/31/40
G5/4"	G5/4"	55/39/40
G6/4"	G6/4"	55/44/40
Code	Design	
R	straight	
U	angular 45°	
O	other	
Code	material	
M1	11 353/11 523 (1.0308/1.0570)	
M2	P235GH /P265GH/P250GH (1.0345/1.0425) (11 373/11 416/11 418)	
M3	15 020 (16Mo3) (1.5415)	
M4	15 128 (1.7715)	
M5	17 240 (AISI 304) (1.4301)	
M6	17 248 / 17 348 (AISI 321/ AISI 316Ti) ( 1.4541/1.4571)	
Code	length	
S	standard	
Z	on request write down in mm	
Code	diameter	
S	standard	
Z	on request write down in mm	
Code	contact surface	
DP	design for contact surface with sealing (for pres.gauges)	
Means of order: THNV M20 R M1 100 S		
Product branding: THNVM20R11523L100		