

## DIFFERENTIAL PRESSURE GAUGE 5670/5675/1620

diameter 100, 160mm  
2x bottom connection

### DESCRIPTION:

- stainless steel case 17 240/1.4301
- glass , safety glass inspection hole
  - connection 2x bottom
- measure mechanism: stainless steel 17 348/1.4571
  - seals: NBR, FPM

### APPLICATION:

- heating industry
- air-conditioning
  - food industry
- healthcare industry
- chemical industry

### TECHNICAL PARAMETERS:

- diameter: 100, 160mm
- measure range: 0-25mbar...0-25bar
- max. static pressure: 25bar, 100bar
- connection threads: 2x G1/2; 2x G1/4
  - accuracy class: 1,6%
- protection: IP 54, with glycerine filling IP 65

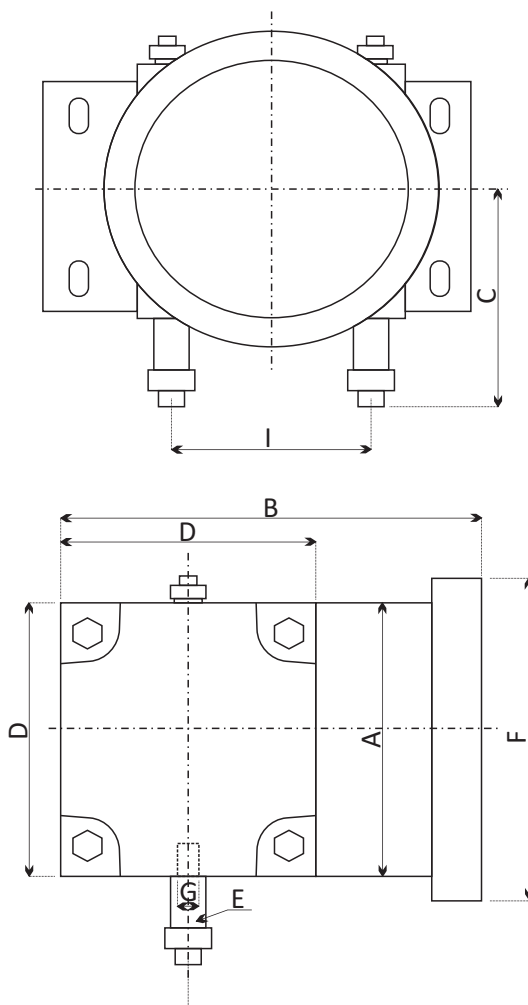
### SPECIFICATION:

Differential pressure gauges 5670/5675/ 1620 are all-stainless steel heavy-duty manometers designed into heavy and demanding conditions.

They are produced in compliance with EN 837-3 standard. Differential pressure gauges 5670/5675 can be used for pressure measurements of all liquids, vapours and gases, that do not have a corrosive effect on copper alloys and stainless steel class 17 348/1.4571 as well as their viscosity allows the use of membrane measuring mechanism. Environment temperature -30 up to 60°C, medium temperature  $T_{max}$  60°C. Pressure gauges are supplied in sizes  $d=100, 160$ mm. They may be supplied with glycerine filling, electric contacts and ATEX environment design.

Other design options on request - special scale design, connection threads, etc.

• 5670/5675



Dimensions in mm										Weight
Type	Nom.size	A	B	C	D	E	G	F	I	kg
5670	100	103	150	112	100	22	M20x1,5	118	54	4,6
5675	160	150	150	112	100	22	G1/2, G1/4	166	54	4,9