



MINING PRESSURE GAUGE 1251,1252

diameter 40, 50mm
bottom connection

DESCRIPTION:

- case: cast CuZn (1251), stainless steel (1252)
 - acrylate inspection hole
 - bottom connection DIN20043/DN10
- measure mechanism CuZn and copper alloys
 - glycerine damping optional

APPLICATION:

- mining industry
 - hydraulics
- other heavy industry

TECHNICAL PARAMETERS:

- diameter: 40, 50mm
- measure ranges: 0-100, 160, 250, 400, 600kPa
0-1; 1,6; 2,5; 4; 6; 10; 16; 25; 40; 60MPa
 - connection: DIN20043/DN10
 - accuracy class: 2,5%

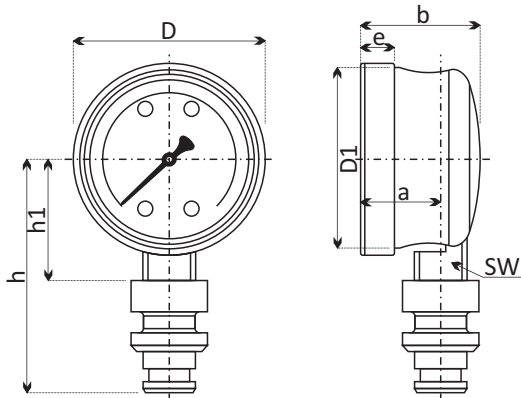
SPECIFICATION:

Mining pressure gauges are produced in compliance with EN837-1 standard. Mainly used for simple pressure measurement of liquids, vapour and gases, that do not have corrosive effect on copper alloys and their viscosity allows for use of bourdon pen measurement mechanism.

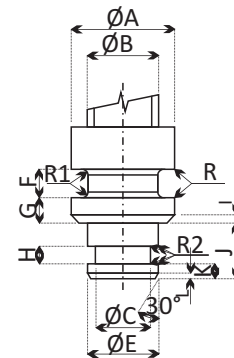
Pressure gauges are designed for use in mining industry. They are equipped with mining connector according to DIN20043/DN10. Pressure gauges are supplied in heavy duty design with case made of CuZn cast (type 1251) or stainless steel (type 1252). Maximum environment temperature 10 up to 60°C, medium temperature T_{max} 60°C. Other design options on individual request - special scale design, connection thread, glycerine damping, etc.

Code	1251	1252
Diameter	50mm	
Design	bottom connection	
Accuracy class	2,5%	
Ranges	0-100kPa...0-60MPa	
Highest accuracy	constant pressure - 3/4 from all range, fluctuating pressure - 2/3 from all range	
Case	CuZn cast	stainless steel
Ring	stainless steel	
Inspection hole	acrylate	
Dial	white Al sheet with black print	
Needle	black varnished metal	
Machine basis	CuZn - alloy	
Spring	Cu - alloy	
Connector	Cu - alloy according to DIN 20043, DN 10	
Filling	glycerine 99,7 %	
Medium temper.	T _{max} 60°C	
Environment temp.	T _{min} 10°C, T _{max} +60°C	
measure depend. on temperature	0,4%/10K for deviations from normal temperature 20°C	

• type 1251



• type 1252



Dimensions in mm								
Type	Nom. size	a	b	D	D1	h	e	SW
1251/1252	50	18	31	53	44	63	6	14

Dimensions in mm													
A	B	R	R1	R2	C	E	F	G	H	I	J	K	L
20d9	13,5	0,5	0,5	0,3	10,8h10	14e8	5,1	5	2,8	1,5	11	3	1