

PRESSURE GAUGE 329

diameter 80 mm
back connection



DESCRIPTION:

- stainless steel /chrom. steel case
- plexiglass/safety glass inspection hole
- back connection CuZn and copper alloys
- measure mechanism CuZn and copper alloys
 - overload 1,3x

APPLICATION:

- firefighting
- tank trucks and cisterns
 - road cleaning vehicles
 - suction vehicles

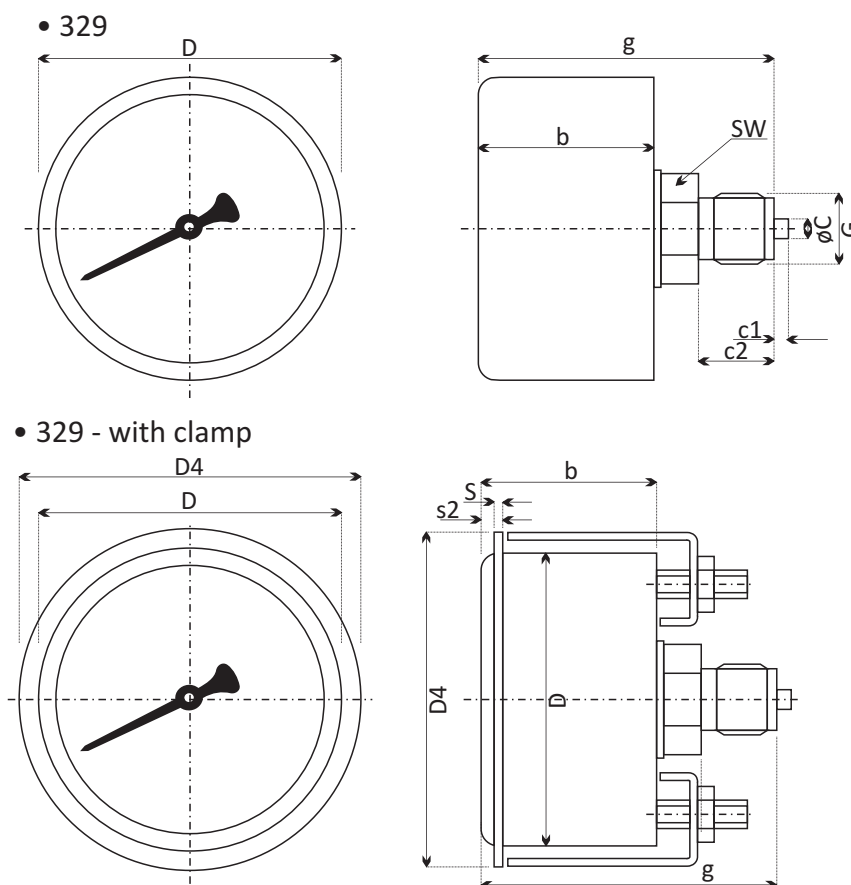
TECHNICAL PARAMETERS:

- diameter: 80mm
- measure ranges: -1+25bar; 0-25bar
- connection threads: M20x1,5 or G1/2
 - accuracy class: 2,5%
 - protection: -IP 54

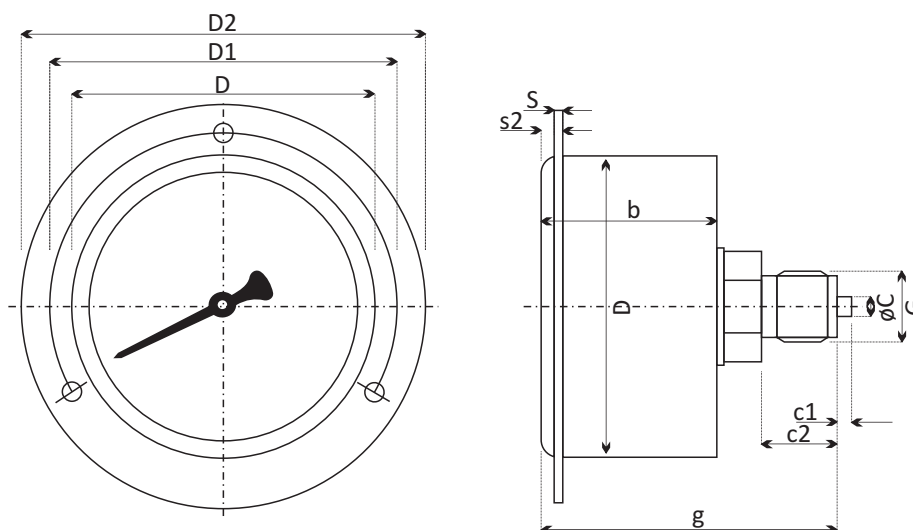
SPECIFICATION:

Pressure gauges type 329 are produced in compliance with EN837-3 standard. Mainly used for simple pressure measurement of liquids, vapour and gases that do not have corrosive effect on copper alloys. Pressure gauges are designed into cisterns, tank trucks and fire fighting vehicles. They are to be placed onto pumps and suction devices. Equipped to be used in more demanding conditions. Resistant to shocks, machine vibrations and pulses. Their heavy-duty design ensures high functionality, safety and long life-time. Environment temperature -25 up to 60°C, medium temperature -20 up to 80°C. Other design options on individual request - special scale design, connection threads, lazy needle, red line, mirror dial, stainless steel front flange,....

Code	329
Diameter	80mm
Design	back connection
Accuracy class	2,5%
Range	-1 + 25bar, 0-25 bar
Highest accuracy	constant pressure - all range, fluctuating pressure - 0,9x from all range, short-term load - 1,3x
Case	chrome plated steel / stainless steel
Ring	chrome plated steel / stainless steel
Inspection hole	plexiglass / safety glass
Scale	white Al sheet with black print according to DIN 16 099
Needle	black sprayed Al sheet
Machine basis	CuZn - alloy
Spring	Cu - alloy
Connection	CuZn - alloy, zinc plated
Thread	M20x1,5 or G1/2
Medium temper.	T _{min} -20°C T _{max} 80°C
Environment temp.	T _{min} -25°C, T _{max} 60°C
Measuring depend. on temperature	0,5%/10K for deviations from normal temperature 20°C
Protection	IP 54 by EN 60 529 / IEC 529
Weight approx.	0,55kg



- 329 - with front flange



Dimensions in mm

Type	Nom.size	s	s2	c1	c2	c	G	g	D	b	SW	d1	d2	d3	d4
329	80	2	6	3	20	6	M20x1,5; G1/2	78	80	46	27	95	110	4,8	90

