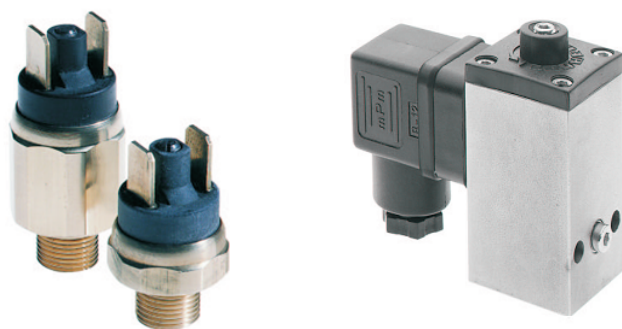


PRESSURE SWITCHES

ranges 0,3-400bar
voltage 42-250V



DESCRIPTION:

- adjustable or fixed hysteresis
- membrane or piston design
- connecting, disconnecting or throw-over contact

APPLICATION:

- heating industry
 - hydraulics
- air-conditioning
- cooling systems

SPECIFICATION:

Pressure switches are designed to maintain required pressure level. They are a cheaper option to contact pressure gauges and pressure regulators.

Wide range of switches from standard, contact, throw-over to heavy-duty type will meet your requirements of simple pressure regulation without the need of current state indication.



Series 200 - STANDARD MAX. 42V

- membrane pressure switch
ranges from 0,3-10bar



Series 400 - STANDARD MAX. 250V

- membrane and piston design
ranges from 0,3-200bar



Series 600 - HEAVY DUTY MAX. 250V

- membrane and piston design,
ranges from 0,2-400bar
high overload capacity



Series 700 - PRESSURE DIFFERENCE SENSOR MAX. 250V

- membrane and piston design

