

PRESSURE DIFFERENCE SWITCH series 700

throw-over contact
max. 250V



DESCRIPTION:

- working element:
membrane with spring, NBR, EPDM, Viton
- switching element: throw-over contact SW
 - installation position: any
 - material: brass

APPLICATION:

- heating industry
 - hydraulics
- air-conditioning
- cooling systems

TECHNICAL PARAMETERS:

- differential pressure measuring ranges: 0,3-2bar, 0,5-3bar, 2-10bar, 5-50bar
 - max. static pressure: 10, 250bar
 - connection thread: 2x G1/8
 - hysteresis: 15-20%
 - max. el. contact load: 250V AC / 5A, 250V DC / 0,25A – resistance and inductive load
- el. connection: conector DIN 43650 with output Pg9
 - protection: IP 65

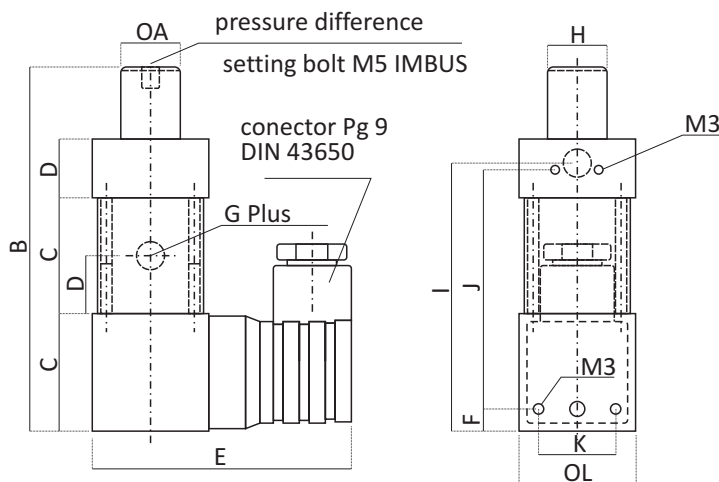
SPECIFICATION:

Pressure difference switch series 700 with throw-over contact (SW) membrane and piston, designed for wide range of applications. Used for gases and liquid pressure measuring within the temperature range -25+85°C, always according to type of membrane, mainly air, water, oil emulsion, hydraulic oils and other medium on request. Max. voltage 250V design max. 5A.

Standard connection thread 2x G1/8" (material brass alternatively stainless steel). Membrane material: NBR (EPDM, Viton, CR).

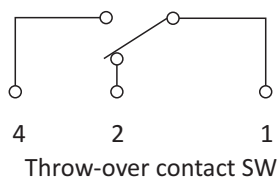
| | | | |
|-----------------------|---|---------------------------------------|--------------------------------------|
| Type | 705 | 710 | 720 |
| Range (bar) | 0,3-2 | 0,5-3 | 2-10 / 5-50 |
| Max.working pr. bar | max. 10 | 10 | 10 / 25 |
| Destructive pr. (bar) | static pressure max. 15 | static pressure max. 15 | static pressure max. 200 / 350 |
| Working element | membrane with spring | membrane with spring | piston with spring, UR (Viton, NBR) |
| Switching element | throw-over contact – SW – microswitch with silver-plated contacts (alter. gold-plated contacts) | | |
| Mech. service life | 10 ⁶ cycles | | |
| Attachment | 4 threaded holes M3 in sensors body | 2 through holes Ø 5,2 in sensors body | 2 through holes Ø4 in sensors body |
| Connect. thread „A“ | 2x G1/8 | | |
| Install. position | any | | |
| Surrounding temp. | -25+85°C, always according to membrane type (may be increased on request) | | |
| Medium | air, water, hydraulic oil, oil emulsion, other medium on request | | |
| Setting | bolt with inner hexagon M5 DIN 914 – under pressure | | |
| Hysteresis | 15 – 20% | | |
| Switching frequency | max. 100 Hz | | |
| Max.el.contact load | 250V AC / 5A; 250V DC / 0,25A – resistance or inductive load | | |
| El. connection | conector DIN 43650 with output Pg9 | | |
| Protection | IP 65 | | |
| Weight | 430g | 1030g | 1125g |
| Material | brass | brass, alter. stainless steel | galvanised st., alter. stainless st. |

• Pressure switch series 700

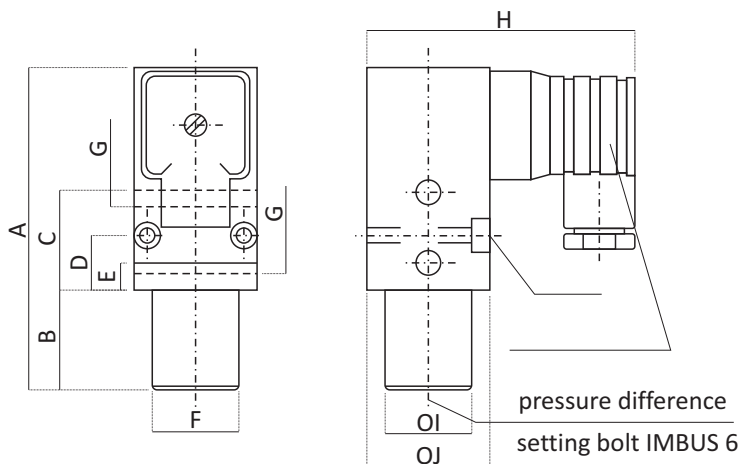


| Dimensions in mm | | | | | | | | | | | | |
|------------------|----|----|----|----|---|------|----|----|----|----|----|--|
| A | B | C | D | E | F | G | H | I | J | K | L | |
| 15 | 94 | 30 | 15 | 68 | 6 | G1/8 | 14 | 68 | 62 | 21 | 30 | |

Contact wiring diagram



• Pressure switch series 700



| Dimensions in mm | | | | | | | | | |
|------------------|----|----|----|---|----|------|----|----|----|
| A | B | C | D | E | F | G | H | I | J |
| 118 | 27 | 52 | 35 | 9 | 30 | G1/8 | 77 | 28 | 40 |

Contact wiring diagram

