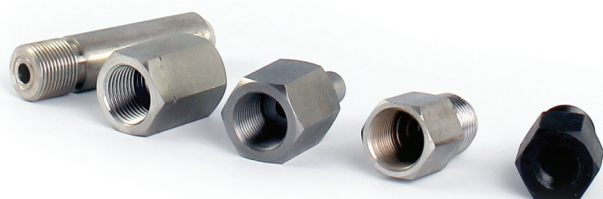


MANOMETRIC CONNECTORS AND ADAPTERS

steel, stainless steel, brass
 T_{\max} 300°C, PN 630



DESCRIPTION:

- Adaptive manometric connector type 13 75 24.A
 M right inner / M left inner
 G inner right / G left inner



- Sliding nut type 13 75 24.B
 Nipple for welding nut



- Nipple for welding type 13 75 24.C
 Sliding nut nipple



- Piece for welding type 13 75 24.D
 Welding piece, use with „A“
 adapter, M left or right



- Adaptive manometric connector type 13 75 24.E
 M right inner / G right outer
 G right inner / M right outer



- Adaptive manometric connector type 13 75 24. F
 M right inner / G right inner



- Adaptive socket connector 13 75 24. G
 M left inner / G right inner



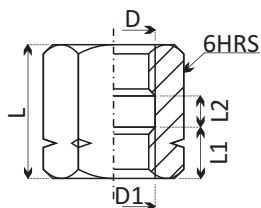
SPECIFICATION:

Pressure gauge connectors and adapters are produced in accordance with standard EN837-2. Connectors and adapters are designed for connection and reduction of pressure gauges with manometric cocks and valves. Supplied in materials: carbon steel, stainless steel and brass.

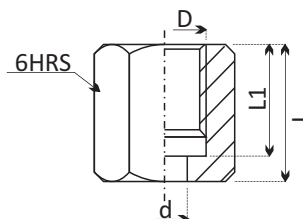
TECHNICAL PARAMETERS:

- PN 63MPa, 50MPa
- T_{\max} : 200°C, 300°C

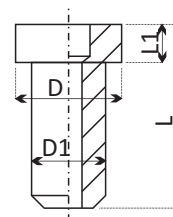
• type 13 75 24.A



• type 13 75 24.B



• type 13 75 24.C



• adaptive manometric connector type 13 75 24.A

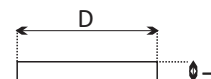
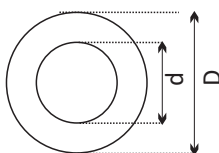
D	D1	L	L1	L2	SW	Material
M 12 x 1,5	M 12 x 1,5L	23	9	5	17	.1 carbon steel 11 109
G1/4	G1/4L	23	9	5	17	.3 stainless steel 17 027
M 20 x 1,5	M 20 x 1,5L	36	15,5	5	24/27	.5 brass 42 3223
G1/2	G1/2L	36	15,5	5	24/27	individual

• sliding nut type 13 75 24.B

D	d	L	L1	SW	Material
M12x1,5	6,5	21	17	17	.1 carbon steel 11 109
G1/4	6,5	21	17	17	.3 stainless steel 17 027
M20x1,5	12,5	30	24	24/27	.5 brass 42 3223
M20x1,5L	12,5	30	24	24/27	individual
G1/2	12,5	30	24	24/27	

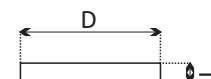
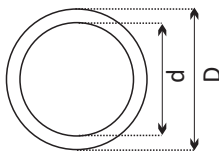
• nipple for welding type 13 75 24.C

*	D	D1	L	L1	Material
M12x1,5 (G1/4)	9,5	6	25	6	.1 carbon steel 11 109
M20x1,5 (G1/2)	17,5	12	35	5	.3 stainless steel 17 027
					individual



• pressure gauge sealing

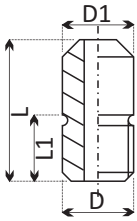
Thread	D	d	L	Material
M12x1,5 (G1/4)	9,5	5,5	2	.1 aluminium (Al)
M20x1,5 (G1/2)	17	6,5	2	.2 copper (Cu)



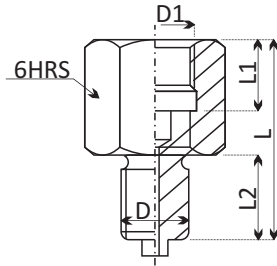
• thermometer sealing

Thread	D	d	L	Material
M12x1,5 (G1/4)	17	13	2	.1 aluminium (Al)
M20x1,5 (G1/2)	26	21	2	.2 copper (Cu)
M24x1,5	30	24	2	
M27x2	32	27	2	
M33x2	39	33	2	

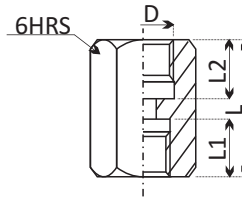
• type 13 75 24.D



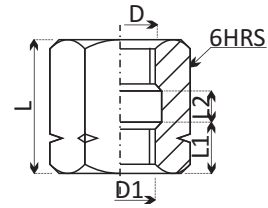
• type 13 75 24.E



• type 13 75 24. F



• type 13 75 24. G



• piece for welding type 13 75 24.D

	D	D1	L	L1	Material
M12x1,5	12	12	50	12	.1 carbon steel 11 109
M20x1,5	20	20	80	20	.3 stainless steel 17 027
					individual

• adaptive manometric connector type 13 75 24.E

D1	D	L	L1	L2	SW	Material
M20x1,5	G1/2	40	18	18	24/27	.1 carbon steel 11 109
M20x1,5	G1/4	35	18	11	24/27	.3 stainless steel 17 027
M20x1,5	M12x1,5	35	18	11	24/27	.5 brass 42 3223
G1/2	M20x1,5	40	18	18	24/27	individual
G1/2	M12x1,5	35	18	11	24/27	
G1/2	G1/4	35	18	11	24/27	
M12x1,5	G1/2	40	12	18	24/27	
M12x1,5	G1/4	28	12	11	17	
M12x1,5	M20x1,5	40	12	18	24/27	
G1/4	M20x1,5	40	12	18	24/27	
G1/4	M12x1,5	28	12	11	17	
G1/4	G1/2	40	12	18	24/27	

• adaptive manometric connector type 13 75 24.F

D1	D	L	L1	L2	SW	Material
M20x1,5	G1/2	40	16	19	24/27	.1 carbon steel 11 109
						.3 stainless steel 17 027
						.5 brass 42 3223
						individual

• adaptive socket connector type 13 75 24.G

D1	D	L	L1	L2	SW	Material
M20x1,5L	G1/2	33	14	5	24/27	.1 carbon steel 11 109
						.3 stainless steel 17 027
						.5 brass 42 3223
						individual