

FLOWMETER LZM-Z

panel mounting
rate of flow:

10 l/h - 170 l/min liquid
0,1 m³/h - 350 m³/h gas



DESCRIPTION:

- case: acrylate, glass
- connection material: ABS, PVC, polypropylen brass, stainless steel, chromium-plated brass
- float: acrylate, teflon
 - sealing: NVR, PTFE
 - control valve
- installation: only vertical
- option of liquid(water) and gases (air) measuring

APPLICATION:

- food industry
- mechanical engineering
- test and lab equipment

TECHNICAL PARAMETERS:

- model: 15Z, 15ZA, 25Z
- measuring range: 10-100, 16-160, 25-250 l/h
0,5-4...10-170l/min (water)
from 0,1-1m³/h up to 35-350m³/h (air)
 - T max: 80°C
 - PN: 6 bar
- thread: G1/2, G1"
- accuracy class: 4%

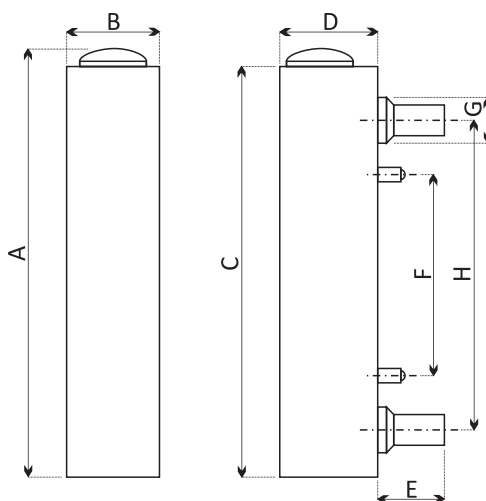
SPECIFICATION:

Flowmeters LZM-Z are used for instantaneous flow measurements of liquid and gases.

This model of flowmeter is suitable for panel mounting. Comes in various materials of float and connection. Vertical installation only.

Type	Measuring range		Material	Thread		Accuracy class
	l/min liquid H ₂ O	m ³ /hour gas				
LZM-15ZA	-	0,1-1	ABS, brass, chromium- plated brass, stainless steel	G1/2"	1/2" BSPT	4%
LZM-15Z	-	0,6-6		G1/2"	1/2" BSPT	
LZM-15Z	10-100 l/ hour	-		G1/2"	1/2" BSPT	
LZM-15Z	16-160 l/ hour	-		G1/2"	1/2" BSPT	
LZM-15Z	25-250 l/ hour	-		G1/2"	1/2" BSPT	
LZM-15Z	0,5-4	1-10		G1/2"	1/2" BSPT	
LZM-15Z	1-7	1,6-16		G1/2"	1/2" BSPT	
LZM-15Z	1-11	2,5-25		G1/2"	1/2" BSPT	
LZM-15ZA	2-18	4-40		G1/2"	1/2" BSPT	
LZM-15Z	5-35	10-100		G1"	1/2" BSPT	
LZM-25Z	10-50	20-100		G1"	1/2" BSPT	
LZM-25Z	10-70	16-160		G1"	1/2" BSPT	
LZM-25Z	10-130	25-250		G1"	1/2" BSPT	
LZM-25Z	10-150	30-300		G1"	1/2" BSPT	
LZM-25Z	10-170	35-350		G1"	1/2" BSPT	

- LZM-15Z, LZM-15ZA, LZM-25Z



Dimensions in mm								
Type	A	B	C	D	E	F	G	H
LZM-15ZA	157	32	150	35	25	60	25	110
LZM-15Z	175	32	168	35	25	76	25	127
LZM-25Z	234	45	226	46	33	100	37	160