

FLOWMETER LZM-6T O₂

with valve
for oxygen measurements
ranges: 0 – 14l/min



DESCRIPTION:

- case: acrylate
- connector material: ABS, brass, chromium-plated brass
 - float: acrylate, stainless steel
 - sealing: O-ring(rubber)
 - control valve
 - installation: only vertical
- option of gas measurement(oxygen)

APPLICATION:

- food industry
- mechanical engineering
 - air-conditioning
 - power engineering

TECHNICAL PARAMETERS:

- model: LZM-6T O₂
- measure range: 1-3l/min... 0,5-14l/min
 - thread: M10x1mm or 9/16-18
 - accuracy class: 5%

SPECIFICATION:

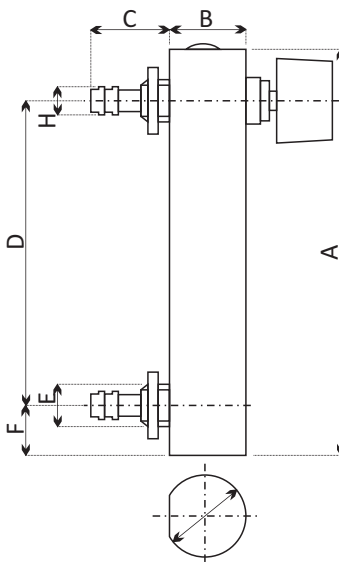
Flowmeters LZM-6T O₂ are used for flow control and measurements of oxygen and its concentrations. Mediums flow may be regulated by a valve.

This model is suitable for panel mounting. Produced in accuracy class 5%. Float, connector and valve can be made of various materials, optional special scale design for oxygen, etc.

Install into vertical position only.

Type	Range(l/min)	Connection	Accuracy class	Design
LZM-6T O ₂	1-3	onto pipe	5%	with valve LZM-6T O ₂ without valve LZM-6O O ₂
	0-5			
	1-5			
	1-5			
	0,5-10			
	2-10			
	0,5-14			
Design	Valve	Connection	Float	Sealing
T-with valve	brass	ABS	stainless steel	rubber
O - no valve	stainless steel	brass	acrylate	butyl
		chromium-plated		

• LZM-6T O₂



Type	Range (l/min)	Dimensions (mm)							
		A	B	C	D	E	F	G	H
LZM-6T O ₂	1-3	60	20	19 -21	40	M10x1 or 9/16-18	8	22	8
	1-5	106	20		80		13	22	8
	0,5-10	106	20		80		13	22	8
	2-10	106	20		80		13	22	8
	0,5-14	106	20		80		13	22	8
	0-5	115	20		90		13	22	8
	1-5	115	20		90		13	22	8