

GALVANIC HEATING ELEMENT



Type - 1701
Type - 1705 – shaped galvanic heating element

1701 - VERTICALLY IMMERSIBLE HEATING ELEMENTS

DESCRIPTION:

- rods material: stainless steel 17 348/1.4571, stainless steel 17 240/1.4301, porcelain, teflon, titanium, boron-silica glass

1705 - SHAPED HEATING ELEMENTS

DESCRIPTION:

- rods material: stainless steel 17 240/1.4301, stainless steel 17 348/1.4571, stainless steel teflon-plated, individual
- heating rods profile D8,5mm, 11,5x6,2mm
- power on individual requirements

APPLICATION:

- food industry
- mechanical engineering
 - power engineering
 - heating industry
 - hydraulics

TECHNICAL PARAMETERS:

- power: 1 100, 1 500, 1 800, 3 000, 4 500 (1701), on request (1705)
- supply: 3x400V (1701), on request (1705)
 - protection: IP 65 (1701)

SPECIFICATION:

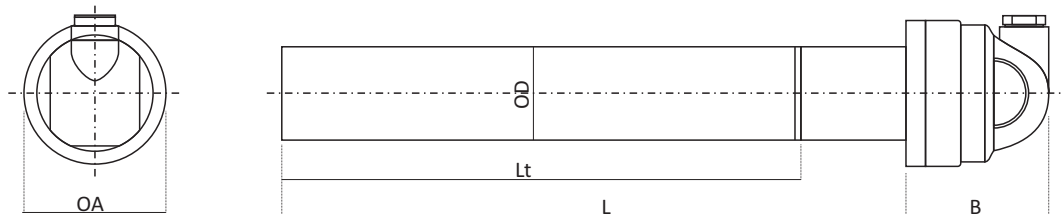
Vertical galvanic heating elements (1701) consist of coating (silica glass or noble steel), ceramic heating lining and water-proof el. terminal board. On the coating there is always a mark stating the minimum submersion, if there is no such mark, the element must be fully immersed in the bath during heating operation. El. terminal board is made of polypropylen, waterproof (IP 65) and resistant to heated medium as well as its vapour.

Shaped galvanic heating elements (1705) are shaped from long heating rods of oval or circular cross-section. The bottom heating part may as well follow an atypical shape of the tank. Outlets may be covered by PE head, Al box or rubberized head smoothly changing into cable.

1701 - vertically immersible heating elements

TECHNICAL PARAMETERS:

Type	Supply (V)	Power (W)	L (mm)	Lt (mm)	D (mm)	Coating material
1701590010	3x400	1500	600	400	54	17 348/1.4571
1701590020	3x400	3000	800	600	54	17 348/1.4571
1701590040	3x400	4500	1270	1070	54	17 348/1.4571
1701790010	3x400	1500	600	400	54	17 240/1.4301
1701790020	3x400	3000	800	600	54	17 240/1.4301
1701790040	3x400	4500	1270	1070	54	17 240/1.4301
1701290010	3x400	1500	595	370	48	porcelain
1701290020	3x400	3000	785	560	48	porcelain
1701290050	3x400	4500	1280	1070	48	porcelain
1701290010	3x400	1100	600	400	54	porcelain
1701490020	3x400	1800	800	600	54	teflon
1701490030	3x400	3300	1270	1070	54	teflon
1701190010	3x400	1500	600	400	51	titanium Gr 2
1701190020	3x400	3000	800	600	51	titanium Gr 2
1701190040	3x400	4500	1270	1070	51	titanium Gr 2
1701890010	3x400	1500	600	400	50	boron-silica glass
1701890020	3x400	3000	800	600	50	boron-silica glass
1701890040	3x400	4500	1270	1070	50	boron-silica glass
1701390010	3x400	1500	600	400	50	quartz glass
1701390020	3x400	3000	800	600	50	quartz glass
1701390040	3x400	4500	1270	1070	50	quartz glass



Dimensions in mm			
Type	A	B	L
1701...	78	75	545-1270

1705 - shaped heating elements

TECHNICAL PARAMETERS:

Type	Supply (V)	Power (W)	L (mm)	Coating material
1408990060	on request		D8,5mm, max. 4m in straight state	17 348/1.4571
1408990040	on request		11,5x6,2mm, max. 6m in straight state	17 240/1.4301