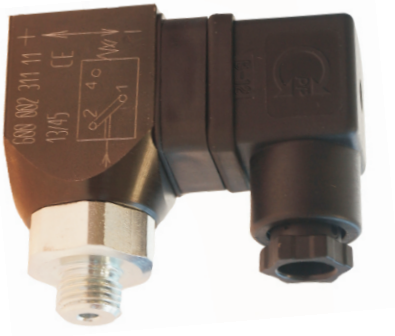


HEAVY-DUTY PRESSURE SWITCH series 600

throw-over contact SW
max. 250V



DESCRIPTION:

- working element membrane with spring NBR, EPDM, Viton, piston with spring
- switching element: throw-over contact SW
 - installation position: any
- material: brass, special design stainless steel, galvanised steel

APPLICATION:

- heating industry
 - hydraulics
- air-conditioning
- cooling systems

TECHNICAL PARAMETERS:

- measuring ranges: 0,3-2bar, 1-10bar, 10-70bar, 50-200bar
- max.working pressure: up to 400bar
 - connection thread: G1/4" (alter. M12x1,5, M10x1, G1/8")
 - hysteresis: 15-20%
- max. el. contact load: 250V AC/5A
250V DC / 0,25A - resistance or inductive load
- el. connection: connector DIN 43650
 - protection: IP 65, DIN 40050

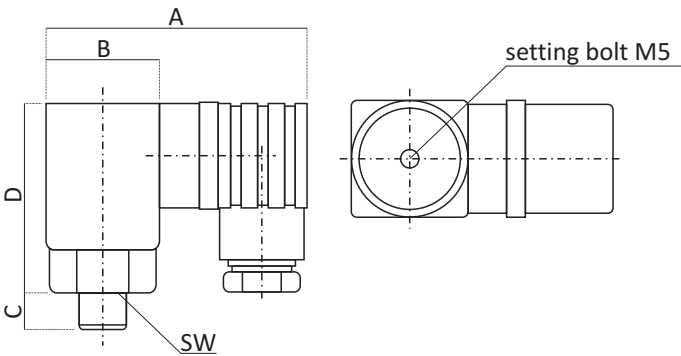
SPECIFICATION:

Heavy-duty pressure switches series 600 with throw-over contact (SW), membrane or piston. They are used for gas and liquid pressure measuring in temperature ranges -25+85°C, always according to membrane type, air, water, oil emulsion, hydraulic oil and other medium on request.

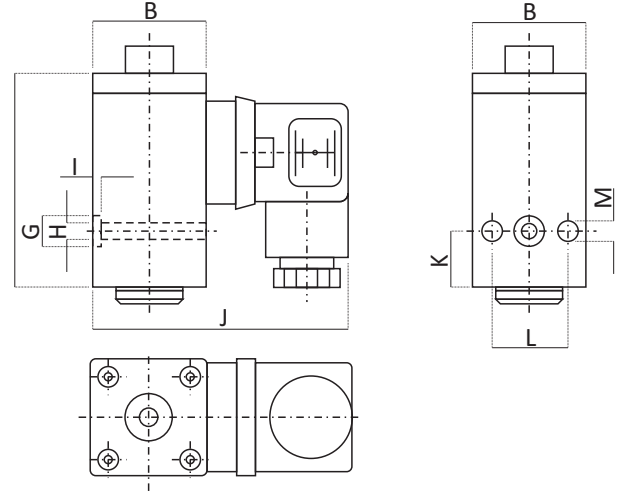
Max. voltage 250V, max. load 5A. Standard connection thread G1/4" (alternatively M12x1,5, M10x1, G1/8"), material galvanized steel (alternatively brass or stainless steel). Adjustable hysteresis. Wide range of membranes for aggressive mediums.

Type	600		601		602
Range (bar)	0,3-2 / 1-10	10-70 / 50-200	0,3-2 / 1-10	10-70 / 50-200	50-400
Max.working pr.bar	2 / 10	70 / 200	2 / 10	70 / 200	400
Descructive pr.(bar)	5 / 20	120 / 300	5 / 20	120 / 300	600
Working element	membr. with spring	piston with spring	membr. with spring	piston with spring	
Sealing	NBR, Viton, CR, EPDM		NBR, Viton, CR, EPDM, KALREZ	UR, NBR, Viton	
Switching element	throw-over contact – SW – microswitch with silver-plated contacts (alter. gold-plated)				
Mech. service life	10 ⁶ cycles				
Attachement	connection thread		inner thread or two holes in the body		
Connection thread	G1/4 (on request M12x1,5; M10x1; G1/8)		G1/4, flange connection practicable		
Installation position	any				
Surrounding temp.	-25+85°C, always according to membrane type (may be increased on request)				
Medium	air, water, hydraulic oil, oil emulsion, other medium on request				
Setting	bolt with inner hexagon M5 DIN 914 – under pressure				
Hysteresis	15 – 20%				
Switching frequency	max. 200 / min				
Max.el.contact load.	250V AC/5A; 250V DC/0,25A – resistance and inductive load				
El. connection	conector DIN 43650				
Protection	IP 65, DIN 40050				
Weight	230g		370g		
Material	galvanised steel, special design brass or stainless steel				

• Pressure switch series 600 - outer thread



• Pressure switch series 600 - inner thread



Dimensions in mm													
A	B	C	D	E	F	G	H	I	J	K	L	M	SW
67	30	10	51	57	66	08	04	1,6	68	15	20	5,2	24

Contact wiring diagram

