

ONE-WAY VALVE V-series

two-way, three-way
PN 250-630



SPECIFICATION:

- one-way valves enable flow in one direction only

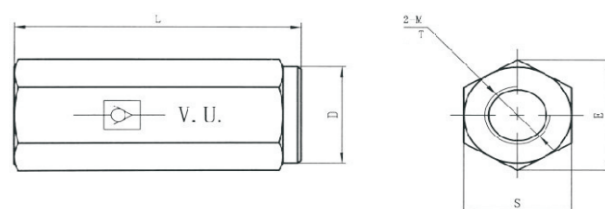
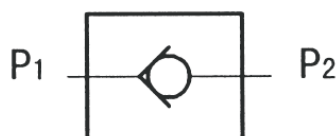
MODEL CODE:

VU -- * -- * / * -- *

1 2 3 4 5

1. type: V-series - one-way valve
2. nominal size: 08, 10, 12, 16, 20, 25, 30, 40mm
3. surface: 01-galvanized, 02-phosphorescent, 03-hard-chromium plated, 04-blue steel
4. connecting thread: 1-metric, 2-BSP
5. throughput pressure: 0,05MPa

SYMBOL:



Diameter	Type	Max. flow (l/min)	Burst pressure (bar)	PN (bar)
08	VU-08***	30	±0,4/0,7	500
10	VU-10***	45	±0,4/0,7	500
12	VU-12***	70	±0,4/0,7	500
16	VU-16***	110	±0,4/0,7	400
20	VU-20***	160	±0,4/0,7	350
25	VU-25***	210	±0,4/0,7	350
30	VU-30***	320	±0,4/0,7	350
40	VU-40***	460	±0,4/0,7	250

Dimensions (mm)					
Type	L	E	S	D	T
VU-08***	62	21,5	19	19	12
VU-10***	68	27,5	24	24	14
VU-12***	77	34,5	30	30	15
VU-16***	88	41,5	36	36	16
VU-20***	105	47	41	41	18
VU-25***	130	63	55	55	20
VU-30***	138	75	65	65	22
VU-40***	160	92	80	80	24