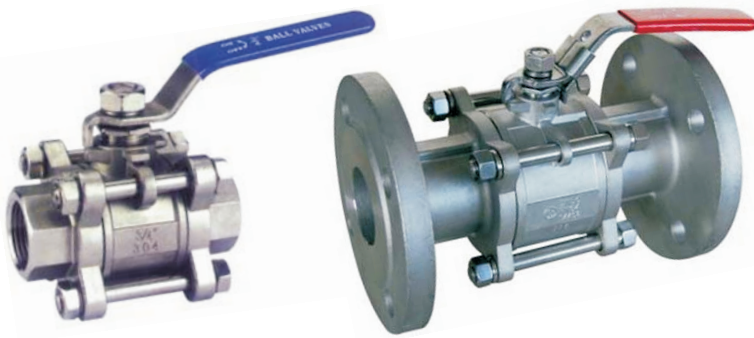


BALL VALVE THREE WAY

two- way, three- way
PN 70



DESCRIPTION:

- Material - SS 304,316L
- Quality precision castings
- Material connections – carbon steell
 - vent hole
 - testing connection
- Design thread, welded, flange DIN, ANSI, GB

APPLICATION:

- air-conditioning
 - energetics
- petrochemical industry
 - food industry

TECHNICAL PARAMETERS:

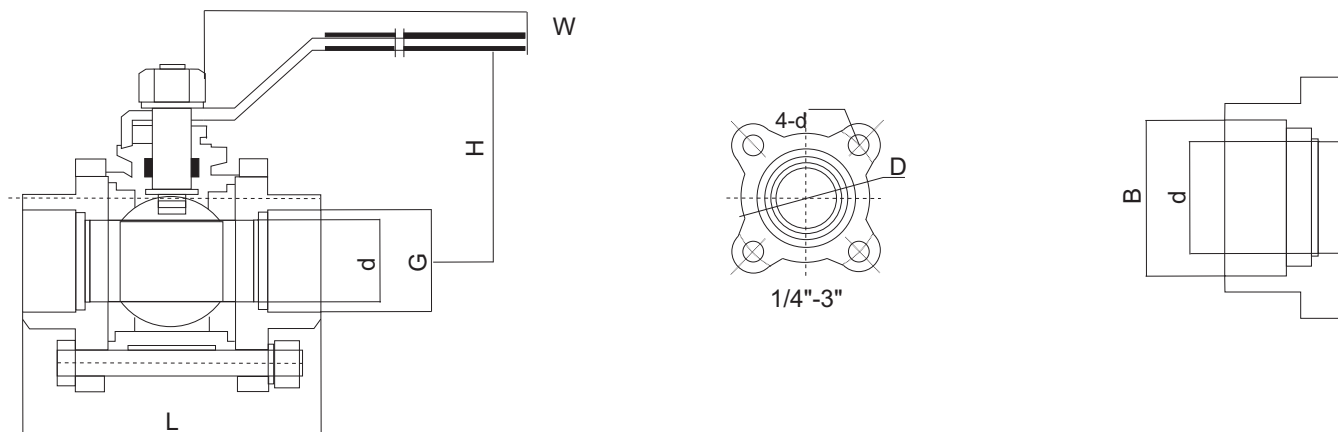
- Types of treads - internal BSPT, NPT, DIN 2999
- connecting threads - G1/4, 3/8, 1 3/4, 1, 5/4, 6/4, 2, 2-1/2, 3, 4
- flanges- DIN, ANSI, GB, flanges for welding
 - P_{max} 70bar

SPECIFICATION:

Ball three-part cock 2 KKT, KKT 3 full flow valve with its floating ball. Floating balls compensates for worn and thermal expansion. FULL design minimizes pressure loss. The shaft of the cock is insured against firing. Ball valve consists of a three-part structure, with control lever stops. Serves as a built-in solid pipeline, such as shut-off valve for any installation position. Other design options according to individual requirements - chateau handles etc .

Type	KKT2	KKT3
Desing	two-way	three-way
Thread	G1/4, 3/8, 1, 3/4, 1, 5/4, 6/4, 2, 2-1/2, 3, 4	
Thread types	BSPT, NPT, DIN 2999	
Flanges	DIN, ANSI, GB, flange weld	
Pmax /bar	70 bar	
Medium	liquids, vapours, technical gases	

- Ball valve two-way, three-way



Thread	Dimensions mm							
	DN	d	L	H	W	4-d	B1	B2
1/4	6	11,5	65	46	95	7	12	15
3/8	10	12	65	46	95	7	14	17,2
1	15	15	75	46	110	8	18	21,3
3/4	20	20	85	54	110	8,5	25	26,9
1	25	25	90	64	140	8,5	32	33,7
1-1/4	32	32	112	69	140	10	38	42,4
1-1/2	40	38	120	76	155	10	45	48,3
2	50	50	145	86	180	11	57	60,3
2-1/2	65	65	170	120	220	16	76	76,1
3	80	80	200	150	260	18	89	88,9
4	100	100	263	170	350	20	108	114,3