

PNEUMATIC DRIVE

pneumatic drive VT for hydraulic ball valve KHB

Specification:

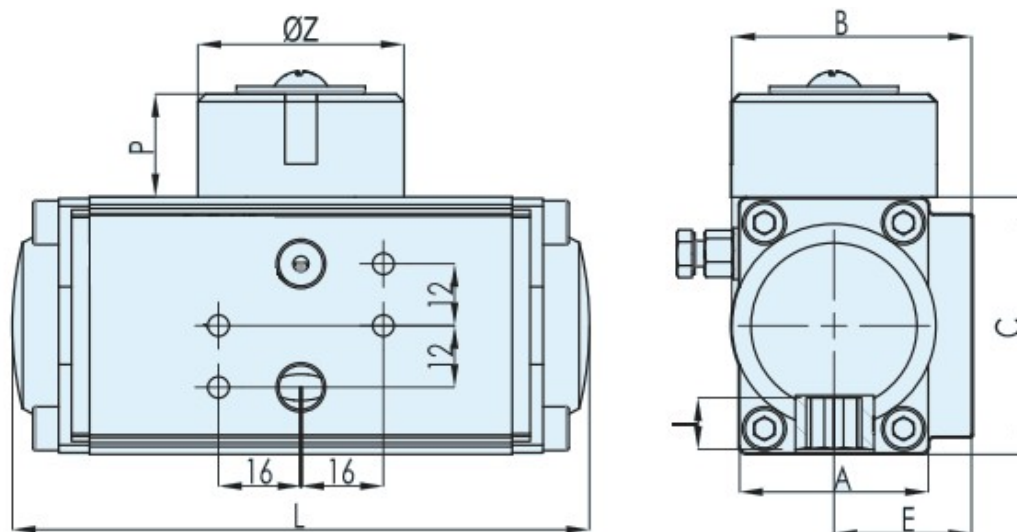
Pneumatic drive of the VT series with a compact design, guarantees easy integration. The pneumatic drive uses a patented reinforced piston with precise drive and various output moments. Mounting accessories comply with the NAMUR standard. Construction and technical features contribute to optimize the life cycle and increase corrosion resistance. Fully compatible with the latest international standards ISO5211, DIN3337 and VDI / VDE3845.

Technical parameters:

Control medium: compressed air
 Control pressure: 6 bar / 6.5 Nm ~ 40 Nm
 Material: extruded aluminum / electrolessly plated parts resistant to internal and external corrosion
 Optional design: DA / SA
 Ball valve dimensions: same as for KHB models



Drawing:



Dimensions: (mm)

Model	A	B	C	L	E	F	P	ØZ	N	I	Flange	Q	Q1	W	W1	Ch	T
VT032	37	47	50	110	27	50	20	40	10	10	F03	-	36	-	M5×8	9×9	G1/8"
VT050	45	70.5	70	154	41.5	80	20	40	10	12	F03/05	36	50	M5×7.5	M6×9	11×11	G1/4"
VT065	62	89.5	89	189	51.5	80	20	40	10	16	F05/07	50	70	M6×9	M8×12	14×14	G1/4"
VT075	68	102.5	100	210	59	80	20	40	14	16	F05/07	50	70	M6×9	M8×12	14×14	G1/4"

VT-SOV Solenoid valve VT-SOV

Specification:

accessories for pneumatic drives, for direct mounting on pneumatic actuators for industrial valves, anodized aluminum, compact small design in variant 5/2 (coil / spool) with the possibility of conversion to 3/2, electrical connection: angled connector with bushing, mounting with two M5 screws



Technical parameters:

Power supply: 24 V DC
Power consumption: 3W
Tension: 125 mA
Process connection G1/4"
Working temperature -25+60°C

Drawing:

One coil valve

