



HEATING ELEMENT WITH REGULATION TRG 05

type TRG 05
2 000W, 3 000W

DESCRIPTION:

- heating element with built-in regulation including thermal fuse
 - connection: brass
 - rods: copper

APPLICATION:

- engineering
 - energy
- heating industry

TECHNICAL PARAMETER:

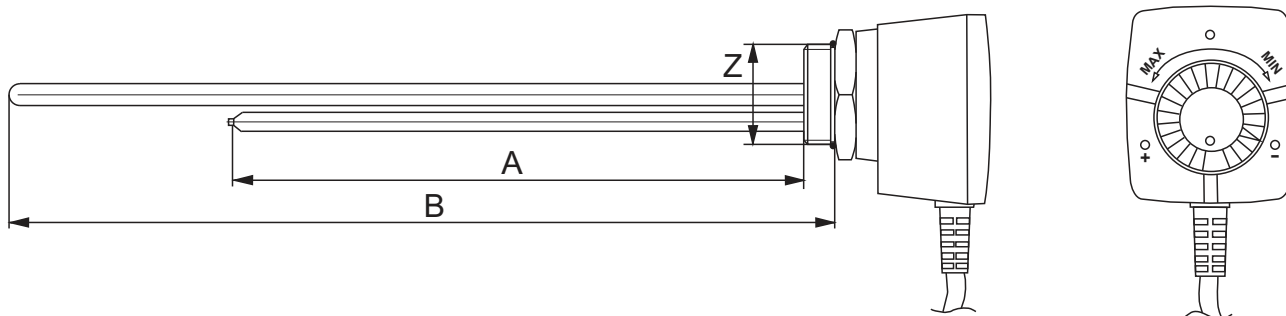
- power: 2 000, 3 000W
- regulation range/ T fuse: 20-70°C/95°C
 - thread: G6/4
- power supply: 1x230V
 - protection: IP 44
- cable cord with pin 1,3m

SPECIFICATION:

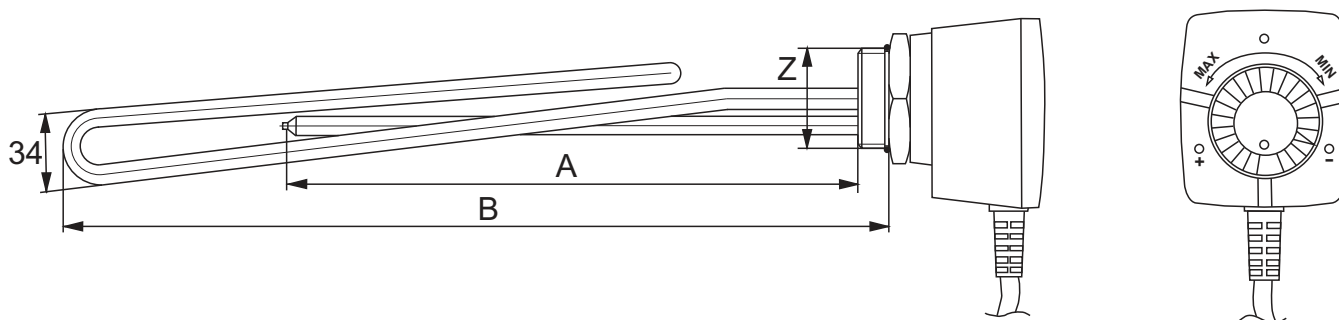
The heater is intended for direct heating of water and similar liquids without the risk of carbonization of the media on the surface of the body. During operation, the body must be constantly immersed up to the head in the liquid. Suitable for use where immediate liquid temperature control is required. Use in boilers and flow heaters.

Regulation range 20-70°C / fuse 95°C, connection thread G6/4". Plastic head with IP 44 cover.

Power (W)	Power supply (V)	Immersion length L	Connction thread	Material	Regulation range / thermal fuse
2000	230	360	G 6/4''	brass/copper	20-70°C / 95°C
3000	230	340			
Protection IP 44					
Cable cord with pin 1,3 m					
Plastic cover					



Dimensions in mm					
Type	Power	Z	A	B	Total length
TRG 05	2000W	G6/4"	240	360	435



Dimensions in mm					
Type	Power	Z	A	B	Total length
TRG 05	3000W	G6/4"	240	340	415