

HEATING ELEMENTS for ATEX

type FP
flanged



DESCRIPTION:

- rods: Incoloy 800, Inconel 625, stainless steel 17346/1.4401, 17 349/ 1.4404, 17 248/ 1.4541
- flange : stainless steel 17 344/1.4401, 17 349/1.4404
- ATEX in accordance with ATEX EX 11 2 G/D

APPLICATION:

- petrochemical industry
 - engineering
- power engineering
- fuel heating
- surface finishes / treatments

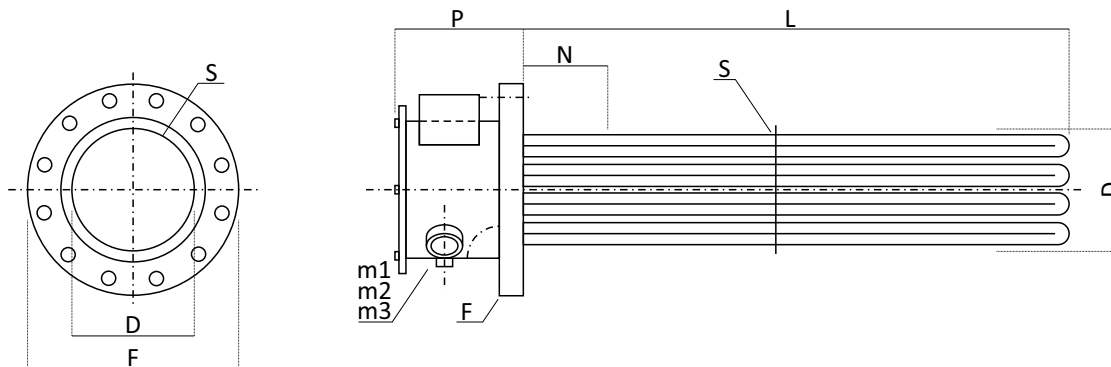
TECHNICAL PARAMETERS:

- power: up to 1000kW
- voltage: 48V - 690V
- flange diameter: 150 - 1000mm
 - protection: IP 66/IP 67
 - temperature class: T1÷T6
- ambient temperature: -60 + 70°C
- max. immersion length: 3665mm

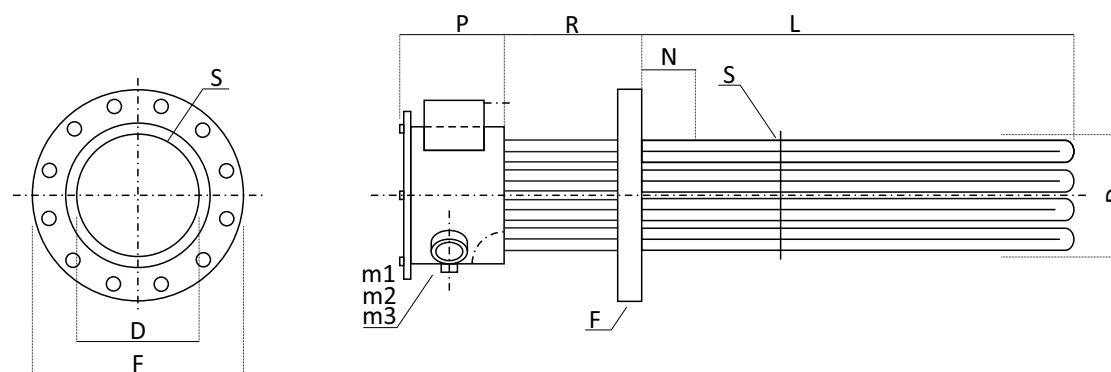
SPECIFICATIONS:

Flanged heaters are designed for heating static or flowing heat media in tanks or in pipes which serves for the transport of specific media. Body design always takes into account individual customer requirements based on which is defined: specific power, number of heating elements, properties of media, the maximum temperature of the mantle with over-new definition of "thermal safety" and following that the use of specific construction materials with corresponding spatial dimension of the heating elements. Design of flanged heaters with replaceable inner inserts in Ex design - single layer. This solution you will especially appreciate it in the case of heating oils and corrosive liquids. Heaters with heaters attached to the flange using threaded fittings with screw with a torx head. The advantage of this solution (with a case that is located in distance from the flange) is that the eventual leakage of the process fluid is dispersed into the external environment not into the electrical terminal.

Heating element FP - flanged



Heating element FP - flanged with non-heating section between flange and terminal block



SPECIFICATIONS:

- F Connection flange
- L Max. length below flange
- N Non-heating section
- P Height of terminal block - case (dimensions depends on flange size)
- R* Non-heating section between flange and terminal block
- D The maximum diameter of the heating bundle, i.e. wetted part
- S Distance template for fixing the position of the heating rods
- M 1÷3 Grommet for cabling with internal thread (mostly 1/2" NPT)